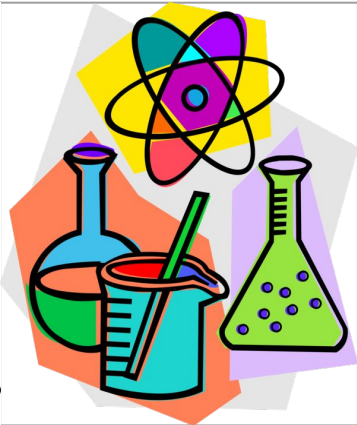
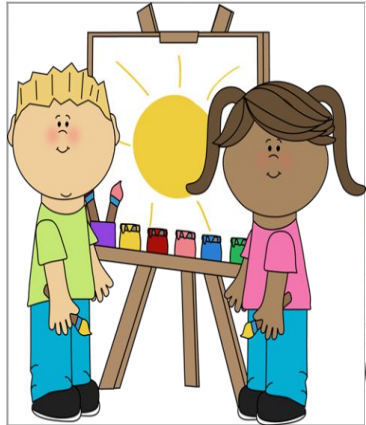


Lois Craig Lions 2020-2021 6 Day Super Specials Schedule



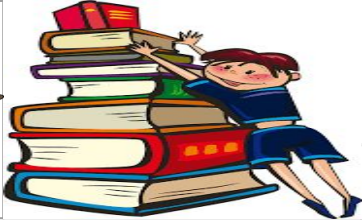
Art Day is ____	Library Day is ____	STEAM Day is ____	Music Day is ____	PE Days are ____ & ____
-----------------	---------------------	-------------------	-------------------	-------------------------



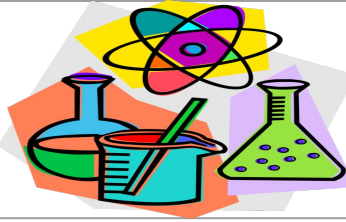
Art Day is ___



Library Day is ___



STEAM Day is ___



Music Day is ___



PE Days are ___ & ___

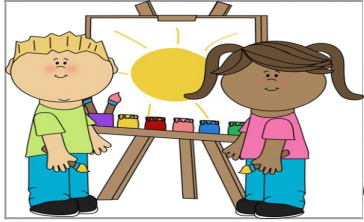


September

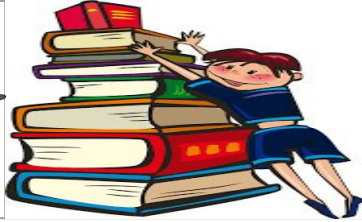
October

SUNDAY	MONDAY	TUESDAY	WEDNESDAY	THURSDAY	FRIDAY	SATURDAY	SUNDAY	MONDAY	TUESDAY	WEDNESDAY	THURSDAY	FRIDAY	SATURDAY
		1 A	2 B	3 C	4 D	5					1 D	2 E	3
6	7 Labor Day NO SCHOOL	8 E	9 F	10 A	11 B	12	4	5 F	6 A	7 B	8 C	9 D	10
13	14 C	15 D	16 E	17 F	18 A	19	11	12 E	13 F	14 PT-Conferences NO SCHOOL FOR ELEMENTARY STUDENTS	15 A	16 B	17
20	21 B	22 C	23 D	24 E	25 F	26	18	19 C	20 D	21 E	22 F	23 A	24
27	28 A	29 B	30 C				25	26 B	27 C	28 D	29 E	30 Nevada Day NO SCHOOL	31

Art Day is ___



Library Day is ___



STEAM Day is ___



Music Day is ___



PE Days are ___ & ___



November

SUNDAY	MONDAY	TUESDAY	WEDNESDAY	THURSDAY	FRIDAY	SATURDAY
1	2 F	3 Election Day NO SCHOOL	4 A	5 B	6 C	7
8	9 D	10 E	11 Veterans Day NO SCHOOL	12 F	13 A	14
15	16 B	17 C	18 D	19 E	20 F	21
22	23 A	24 B	25 Thanksgiving and Family Day NO SCHOOL			28
29	30 C					

December

SUNDAY	MONDAY	TUESDAY	WEDNESDAY	THURSDAY	FRIDAY	SATURDAY
		1 D	2 E	3 F	4 A	5
6	7 B	8 C	9 D	10 E	11 F	12
13	14 A	15 B	16 C	17 D	18 E	19
20	21	22	23	24	25 End of 1st Semester	26
27	Winter Break December 21 to January 1 NO SCHOOL					
	28	29	30	31		
	Winter Break December 21 to January 1 NO SCHOOL					